



## Six Senses Residences & Spa Courchevel

*A discreet residence in the heart of Courchevel 1850 – five minutes from La Croisette, where porcelain stone, chestnut leather and natural timber meet the silence of the Trois Vallées. Six Senses Residences Courchevel takes traditional mountain living to new heights – meticulously designed interiors combining contemporary accents with traditional Savoyard sensibility.*

*The exterior is reminiscent of a French chalet, while the residences' interiors are designed in a light, neutral palette using unique and crafted materials: fine porcelain tiles, flamed grey and beige stone, chestnut leathers and natural timber, brought together to imbue comfort. Each apartment boasts a balcony offering picturesque views – overlooking the snow-capped mountains or the intimate inner courtyard.*

*Due to its high-altitude setting, the residence is open for winter activities from December through April. Located in the heart of Courchevel 1850, Six Senses Residences Courchevel is a five-minute walk from the ski lodge at La Croisette and well-appointed to explore the village.*



## ACCOMMODATIONS

Designed by Alain Foeillet and Morpheus, all apartments capture a harmonious balance of contemporary interiors in light hues with striking accents of fine porcelain tiles (grès cérame) and flamed grey and beige stone. Sustainably-sourced spruce timber forms dramatic feature walls, while heavy woven natural fabrics complement soft furnishings to imbue comfort — accented with custom-made furniture and alpine artwork.

Apartment layout cannot be guaranteed at the time of booking. However, we duly take note of the preferences of our guests and do our utmost to accommodate them, subject to availability.

### **Two-Bedroom Apartment - Courtyard View · 65 - 83 SQM · Sleeps 4 · View: Courtyard / City**

A peaceful contemporary-styled apartment, ideal for guests who spend days on the slopes. Two fully equipped bathrooms with shower, balcony, and open-plan kitchen.

### **Two-Bedroom Apartment - Mountain View · 66 - 86 SQM · Sleeps 4 · View: Mountain / Street**

An Alpine aesthetic for the interior design, leading to balconies and lovely views. Two fully equipped bathrooms with shower, balcony, and open-plan kitchen.

### **Three-Bedroom Deluxe Family Apartment · 78 - 95 SQM · Sleeps 6 · Bunk Beds · View: Mountain & Street**

The perfect family getaway with thoughtfully appointed for family stays for a memorable mountain ski holiday in Courchevel 1850. Two rooms with a double bed each and one room with bunk bed.

### **Three-Bedroom Prestige Family Apartment · 97 - 122 SQM · Sleeps 6 · Bunk Beds · View: Mountain & Inner Courtyard**

Spacious and stylish ski apartments for precious time with loved ones among the French Alps. Configurations include two doubles plus bunk-bed rooms or twin layouts.

### **Three-Bedroom Prestige Apartment · 98 - 129 SQM · Sleeps 6 · View: Mountain, Street & Courtyard**

Mountain-style apartments offering a homely and peaceful atmosphere with expansive Alpine views. Three rooms with one double bed in each. Balconies and a fully equipped kitchen.

### **Three-Bedroom Prestige Residence · 140 - 151 SQM · Sleeps 6 · Bunk Beds · View: Mountain, Street & Courtyard**

Alpine ski apartments commanding glorious views to the valley and Courchevel 1850. Three doubles, or two doubles plus a room with two sets of bunk beds, with balconies and full kitchen.

### **Four-Bedroom Deluxe Residence · 141 - 157 SQM · Duplex · Sleeps 8 · View: Mountain / Street**

The generously proportioned Four-Bedroom Deluxe Residence provides two floors of pure sophistication to indulge in the Alpine experience. The duplex configuration offers flexibility and intimacy, while the generously proportioned rooms provide comfort and tranquility from the main living area. The fit-out and furnishings have been created by Alpine designer of choice Alain Foeillet, capturing a harmonious balance of contemporary styles and traditional mountain influences that celebrate the Alpine aesthetic.

### **Four-Bedroom Prestige Residence · 207 - 218 SQM · Sleeps 8 · View: Mountain, Street & Courtyard**

Available as a duplex (207 sqm / 2,228 sq. ft.) on the 7th-8th floors, or as a single-floor flat (218 sqm / 2,346 sq. ft.) on the 8th. A modern Alpine interior with expansive windows, private balconies and terraces, and a cosy living and dining area — a secluded hidden gem with spectacular mountain views. Light palette accented with fine porcelain tiles (grès cérame), flamed grey and beige stone, and spruce-timber feature walls.

### **Five-Bedroom Prestige Residence · 163 SQM · Sleeps 10 · Bunk Beds · View: Inner Courtyard & Mountain**

A spacious and cosy residence with Alpine-inspired interiors and a generously proportioned terrace. Four doubles plus a bunk-bed room, with a private hot tub. Personal GEM service included.

### **Five-Bedroom Prestige Penthouse · 270 SQM · Duplex · Sleeps 10 · View: Valley, Rooftop & Courtyard**

Our largest residence — a hidden gem in the spirit of a French chalet. Five doubles, two private suites with their own staircase, fireplace and cinema room. Personal GEM included.



## SUMOSAN COURCHEVEL

The renowned Japanese restaurant Sumosan offers its signature sushi and contemporary Japanese dishes — a welcome antidote to traditional fondue and raclette, with dishes exclusive to the site.

The menu features signature Sumosan favourites served snow-side, including tuna and truffle rolls, Japanese salmon rice pizza, grilled sea bass with citrus ginger sauce, and Furikake-crusted rack of lamb with mustard sauce. New, exclusive dishes include black caviar rice pizza and torched sushi — such as squid with calamari ink powder, and unagi with unagi cotton candy sauce, torched table-side.

### Sumosan Courchevel

*Address: Rue des Tovets, 73120 Courchevel Savoie, France*

*Telephone: +33 4 86 80 03 03*

*Email: [info@sumosan.com](mailto:info@sumosan.com)*

*Web: [sumosan.com/sumosan-courchevel](http://sumosan.com/sumosan-courchevel)*

## SPA AND WELLNESS

Six Senses Spa Courchevel offers residents, guests and non-guests a healing oasis after an intensive day of skiing and activity. The facilities seamlessly incorporate a manicure and pedicure station, juice bar and boutique, five treatment rooms, an indoor swimming pool, saunas, steam room, Kneipp footbath therapy, an outdoor hot tub, and a fully equipped gym with studio for wellness classes.

### Facilities:

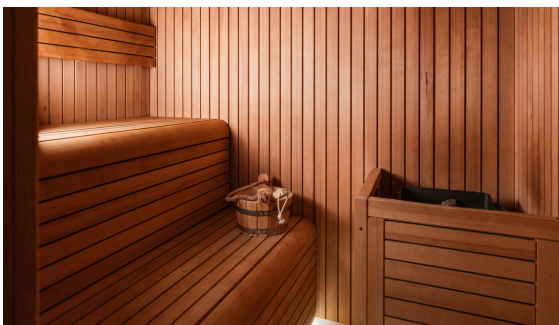
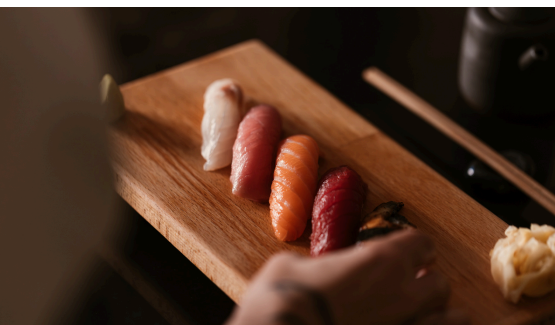
- 5 treatment rooms
- Indoor swimming pool
- Saunas & steam room
- Kneipp footbath therapy
- Outdoor hot tub
- 24/7 Fitness centre & wellness studio
- Manicure & pedicure · Juice bar · Spa boutique

### Six Senses Spa

*Address: Rue des Tovets, 73120 Courchevel · Savoie, France*

*Telephone: +33 9 78 06 37 53*

*Email: [reservations-courchevel-spa@sixsenses.com](mailto:reservations-courchevel-spa@sixsenses.com)*





### SKI CONCIERGE

Six Senses Residences Courchevel is within a five-minute walk or two-minute shuttle ride from the private ski lodge situated at La Croisette, where the ski lifts start. The lodge is fully equipped with heated boot racks, as well as boutiques and cosy bars for après-ski.

On arrival, the Ski Concierge takes guests' equipment to store it at the Ski Lodge. Servicing can be arranged overnight so all is ready for guests to return to the slopes with ease. A ski technician is on-site to make any adjustments.

#### Ski Lodge Hours & Services

*Opening hours: 09:00 – 18:30 daily*

*Heated boot racks · Overnight servicing · On-site ski technician  
Après-ski bars & boutiques*

### GUEST EXPERIENCE MAKER & CONCIERGE TEAM

The residence is supported by a dedicated Guest Experience Maker (GEM) team and a full Concierge service – together offering an extensive range of bespoke services including 24/7 concierge, in-resort shuttle, private chef dinners in-apartment, winter activities, ski instructors, childcare, dining reservations, private boutique viewings and tailored transport solutions. A personal GEM is included with all 4- and 5-bedroom Prestige units.

#### Concierge

*Mobile: +33 6 83 17 01 45*

*Telephone: +33 4 79 06 93 63*

*Email: concierge-courchevel@sixsenses.com*

#### Guest Experience Maker

*Mobile: +33 6 17 83 76 03*

*Telephone: +33 4 79 06 93 63*

*Email: gem-courchevel@sixsenses.com*





## AMENITIES INCLUDED

- Breakfast included
- Personal GEM (Butler) Service included for the Prestige Units – 4 & 5 bedrooms only
- From €200 Spa credit per apartment, per stay – valid strictly between 11:00 and 15:00; applies only to the portion of the treatment consumed within this window. Any part after 15:00 is charged at the applicable public rate.
- Fully equipped kitchen
- Six Senses welcome amenities
- 24/7 Residential 5★ Concierge Services
- Tailor-made ski-in / ski-out service on the slopes (La Croisette ski lifts, Courchevel 1850)
- Daily residential housekeeping & optional mid-week linen change
- Turn-down service
- Access to Six Senses Spa & its facilities
- Complimentary private shuttle within Courchevel 1850, up to the Altiport

## NOT INCLUDED

- **Local city tax:** €5.28 per person per night, for guests aged 18 and above (subject to change from one season to another)
- **Parking with valet service:** €45 per day
- **Pet fee:** €120 per day
- **Additional bedding (sofa bed or extra bed):** €250 per day
- **Packing / Unpacking:** €100 per suitcase

## RESERVATIONS & FURTHER ENQUIRIES

**T:** +33 9 78 06 37 64

**E:** [reservations-courchevel@sixsenses.com](mailto:reservations-courchevel@sixsenses.com)  
[sixsenses.com](http://sixsenses.com)

291 Rue des Tovets, 73120 Courchevel, Savoie, France

## Room Reservation Toll-free Numbers

Australia	1800 978 681	Japan	120 829 718
China	4008 894 800	Russia	8 800 301 4563
France	0805 542 357	UAE	8000 120 003
Germany	0800 723 6216	United Kingdom	0800 458 4466
Hong Kong	800 969 743	United States	855 496 0109