



Six Senses The Palm, Dubai

Set between sand and sea, Six Senses The Palm, Dubai, brings together wellness, conscious living, and rich cultural experiences inspired by Emirati heritage and the natural beauty of the Arabian Gulf. Designed with natural textures and biophilic principles, the LEED-certified architectural narrative draws inspiration from coral, with the curved and latticed rooflines and silhouettes resembling its natural form and beauty.

Arriving by land or water, guests and residents stay connected to Dubai's vibrant energy while finding seclusion and space to breathe. As the colors and light shift through each day, a quieter rhythm unfolds with ease. Cocooned or connected, this is a space to slow down, tune in, and rediscover balance.

- 61 suites
- 172 privately owned branded residences
- Six Senses Spa and wellness facilities
- Four dining experiences and three bars
- Members' lounge
- Indoor and outdoor event facilities
- Earth Lab and sustainability programs
- Direct beach access with unobstructed sea and skyline views



WELCOME

From the design to the experience, Six Senses The Palm, Dubai champions local craftsmanship and nourishing dining concepts to appeal to friends, couples, and families seeking meaning beyond indulgence. Joy is shared across generations, enhanced by social spaces for all the family, including the restaurants and bars, pool and ball sports, and games room, and curated programs for younger explorers. Outside, the lush gardens form a series of mini jebels, meandering valley paths, and palm-fringed courtyards that lead to a private beach.

ACCOMMODATIONS

Offering views toward the open Arabian Gulf, The Palm, or the marina skyline, the 61 suites incorporate sand-colored tones, stone, and timber along with local accents celebrating traditional artistry. Floor-to-ceiling windows enhance the feeling of space and calm, while sensory comforts and personal amenities blend with a style of hospitality that is warm, intuitive, and rooted in the spirit of the UAE.

The 172 privately owned villas and residences extend the brand's lifestyle ethos into permanent homes.

PEARL SUITE 65 sq.m.

Pearl Suites are all about serenity, featuring natural textures and open plan living, leading from the inside to a private balcony with views to The Palm or the Arabian Gulf.

BREEZE SUITE 95 sq.m.

Breeze Suites call out to lovers of natural light, offering generous living spaces and private balconies overlooking The Palm or the Arabian Gulf.

HORIZON SUITE WITH HYDROTHERAPY POOL 125 sq.m.

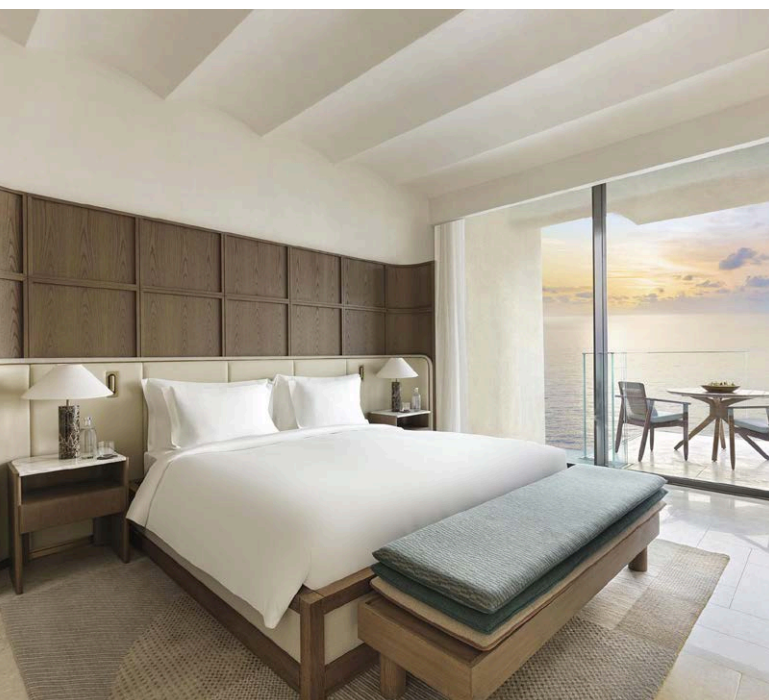
Horizon Suites elevate the experience, with private hydrotherapy pools and terraces with panoramic vistas across The Palm and Dubai skyline.

THREE-BEDROOM POOL RETREAT 230 sq.m.

Pool Retreats welcome families and groups of friends, with expansive living areas and outdoor terraces.

THREE BEDROOM PRIVATE RESERVE 350 sq.m.

Crowning the hotel is the signature Private Reserve, with four guest bedrooms and an extra bedroom, a separate dining room, open kitchen, and lounge leading outdoors to a private pool and terrace.





SUITE AMENITIES

- Private terraces, some with pools
- Bathtub and walk-in shower
- Natural sustainable amenities
- In-suite coffee and tea service
- Yoga mat and wellness minibar
- Pillow menu
- Smart TV and Bluetooth speaker
- Wi-Fi access

GUEST SERVICES

- 24-hour Guest Experience Maker (GEM) service
- 24-hour in-suite dining and concierge
- Multilingual hosts
- Six Senses Spa and wellness programs
- Earth Lab sustainability center
- Boutique and concept store
- Destination experiences and private transfers
- Water sports
- Grow with Six Senses children's club

DINING

A culinary philosophy rooted in the Eat with Six Senses ethos, celebrating regionally sourced ingredients, seasonal produce, and mindful preparation. Each dining experience connects guests to the natural rhythm of the land and sea that inspires every dish.

LOĀM

A warm welcome and menu inspired by the vibrant flavors and nurturing spirit of the Mediterranean, where nature protects, regenerates, and sustains life. Evolving with the gentle rhythm of the day, the restaurant celebrates seasonal produce and regionally sourced ingredients, creating a dining experience that comforts, uplifts, and inspires.

ROKA

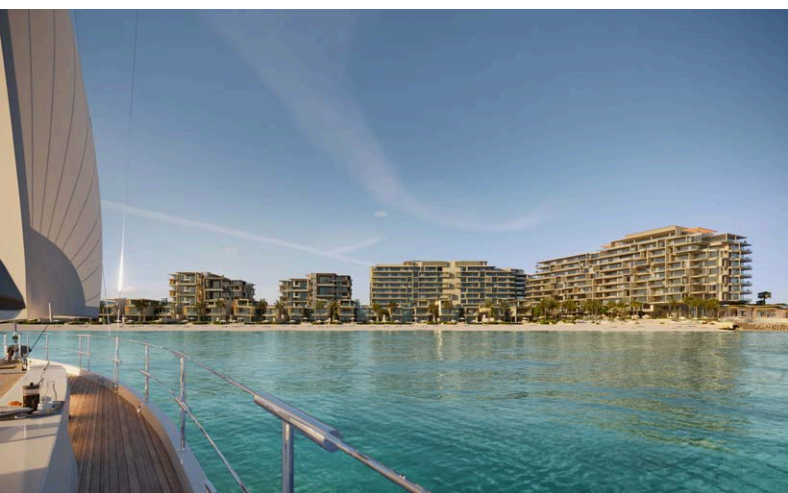
A contemporary Japanese robata-ya restaurant and bar where vibrant evenings unfold over dynamic flavors. The sky garden offers vistas of the sparkling lights over The Palm and starlight above the Arabian Gulf.

EVY Lounge

Designed for connection and culture, the lounge brings together meeting spaces and comfy corners for breakfasts, afternoon teas, and evening gatherings. Resident owners and hotel guests can continue the conversation into the night with live rhythms and creative mixes served up at Two12, a playful take on a speakeasy bar.

Pool and Beach Restaurant & Bar

A casual daytime destination by the water, serving fresh, light dishes and fresh brews or juices in a serene poolside atmosphere.





SIX SENSES SPA & WELLNESS

The spa and longevity center blends advanced biohacking with ancient therapies. Personalized programs restore balance, enhance vitality, and promote long-term well-being through targeted treatments, diagnostic consultations, and integrative longevity solutions.

Facilities & Inclusions:

- 5,500 sq.m. of wellness amenities
- Nova Clinic
- Indoor pool, hammam, and hydro treatment facilities
- Biohacking lounge
- Alchemy Bar
- Gym and fitness studio
- Indoor and outdoor yoga, and meditation studios
- Separate male and female relaxation and revitalization areas
- Outdoor wellness deck and squash court
- Padel and tennis courts
- Visiting Practitioner program

LEISURE ACTIVITIES

- Morning yoga and sound healing sessions
- Beachfront meditation and breathwork
- Sustainability workshops at Earth Lab
- Desert and marine excursions
- Children's activities and family wellness

UNIQUE EXPERIENCES

- Sustainability and farm experiences
- Mindful dining and chef's table concepts
- Alchemy Bar workshops
- Wellness immersions and longevity programs
- Exclusive members' and resident events
- Workshops with local artisans



MEETING & EVENTS

A range of venues that cater to private celebrations, executive retreats, and wellness gatherings.

- Three exclusive, combinable indoor event venues
- Multipurpose meeting lounge
- Private dining and retreat suites with expansive terraces
- Beachfront celebration spaces
- Outdoor event venue within landscaped garden

HOW TO GET THERE

Located on the West Crescent of Palm Jumeirah, Six Senses The Palm, Dubai, is a 35-minute drive from Dubai International Airport (DXB) and a 25-minute drive from Al Maktoum International Airport (DWC).



RESERVATIONS AND FURTHER INQUIRIES

Six Senses The Palm, Dubai
E reservations-thepalm@sixsenses.com
[sixsenses.com](https://www.sixsenses.com)